

Interchangeable Fuse Cutouts

Porcelain and Silicone Cutouts

Peak Demand offers its line of porcelain cutouts as part of the Pinnacle™ Series product family and its line of silicone-composite cutouts as part of the Summit™ Series family of products. Regardless of the insulator selected, Peak Demand cutouts have been designed and tested to stand up to the toughest environment.

We designed, tested, improved, and tested again until we were sure we had a cutout that is second to none.

The Design Team

Peak Demand cutouts were designed by an engineering team with more than 30 years of experience in design, manufacturing, component supply, sales, and customer support of cutouts in the United States and abroad. Each individual on the team is a member of IEEE with one having a presence with the IEEE Committee which writes, reviews, and updates the IEEE cutout standards.

Test Reports

All cutouts have been or will be tested to IEEE C37.42. All tests have been done at globally recognized labs. Test reports are available by request.

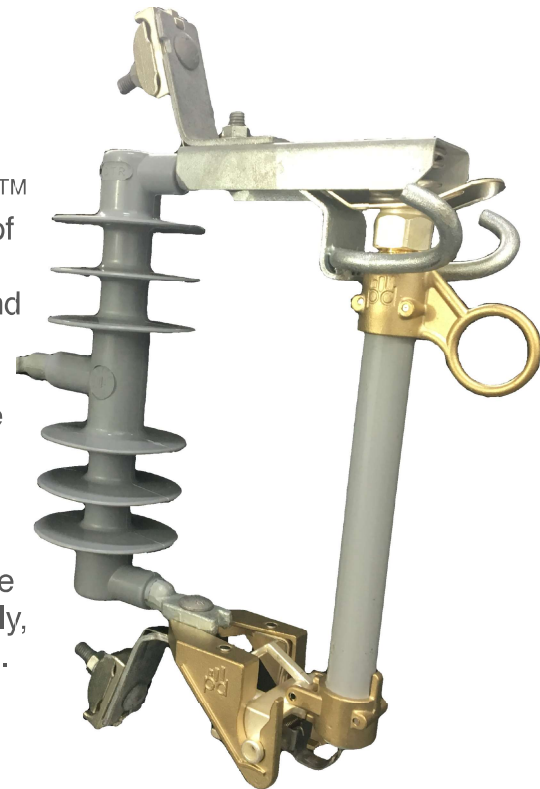
Verified Interchangeability

We tested interchangeability because we know it's critical to utility customers.

Peak Demand's fuse holders have been tested for fit and thermal heat rise in the fuse supports of other manufacturers' cutouts. These tests prove that Peak Demand's fuse holder and fuse supports fit and function in the fuse supports or the fuse holders of other manufacturers.

With verified interchangeability, Peak Demand cutouts will be easily deployed and serviced.

Samples available. Go to PeakDemand.com/try-a-cutout



The Peak Demand Advantage

- Local and overseas manufacturing capability to meet price and lead time needs
- Local stocking to meet delivery needs
- Friendly team of industry veterans with decades of experience serving utility customers
- Real-time inventory monitoring through MyPeakDemand.com

PEAK DEMAND INC.

www.peakdemand.com

1.844.PEAK.247 | 1.844.732.5247

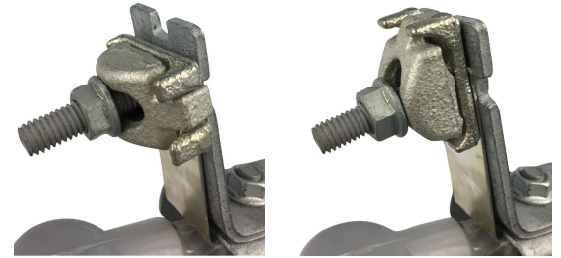
121 Nash Street NW Wilson, NC 27893 USA

peakdemand
demand more™

Designed With Lineman Feedback

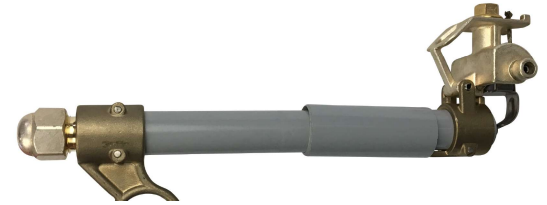
Easy To Install

When selecting the parallel groove terminal option both the top and bottom terminals are rotatable. This allows linemen to terminate in the orientation best suited for the installation. No compromising.



Easier To Fuse

The fuse tube and fuse link fastening bolt lie at a 90 degree angle. Why does this matter? It allows linemen to easily tighten or loosen the bolt with one hand holding the fuse tube and one hand on the wrench.



See The Difference - Easy To Find

Our patent-pending visual open indicator was specifically designed with linemen in mind. The reflective indicator makes an open fused cutout easier to find. Low light and rainy conditions will no longer impede your ability to find an open fused door.

Get this option by simply using a V as the last digit of any Peak Demand cutout style number. Example: FCS-11P110-NV



We Didn't Cut Corners - We Added Them

We didn't cut corners when designing our cutout, we made more of them. To make fuse holder cap removal a breeze we designed a hex style cap. Two and four-sided caps are more difficult to remove.



Making The Job A Bit Easier

We added small arrows to the bottom of the fuse holder trunion. Why? Because when a linemen is fusing the device there is only one right way to wrap the fuse wires. Regardless of experience level, just follow the arrows and you'll get it right every time.

